



CITY OF BREMERTON

Oyster Bay Force Main

Project Number:

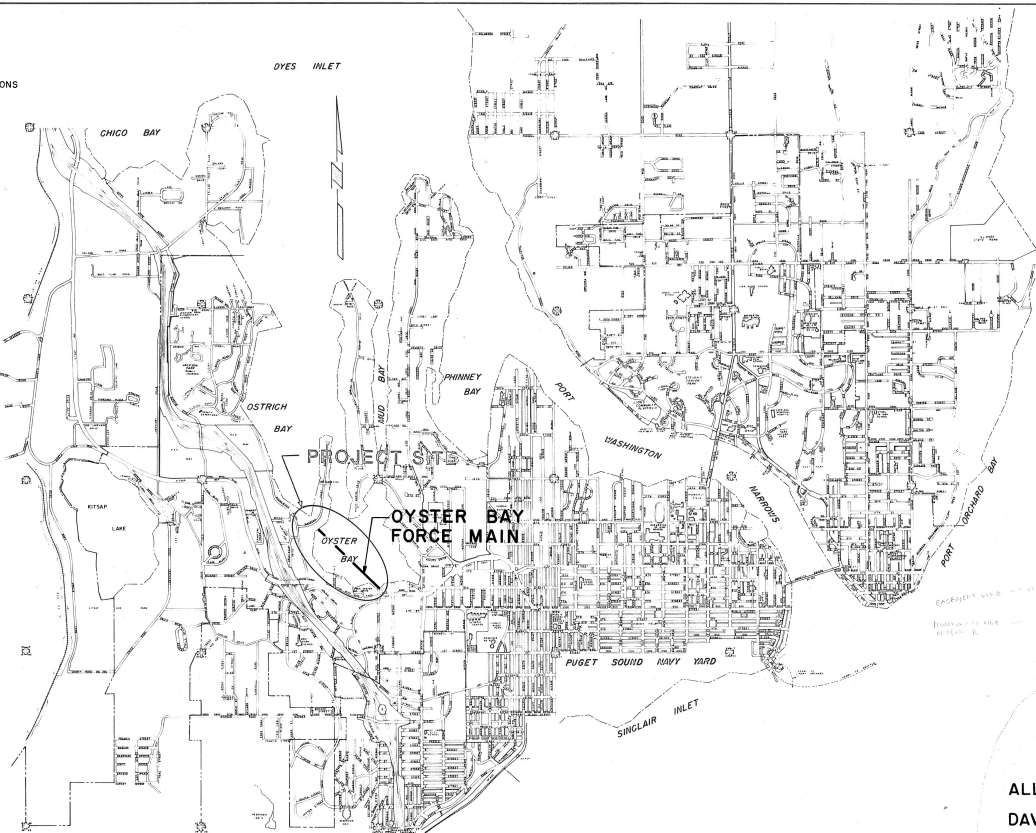
FM from OB-2 to OB-1

INDEX

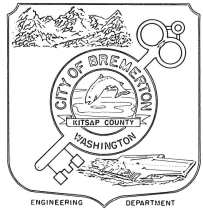
SHEET NO.	TITLE
1	LOCATION MAP, LEGEND, AND ABBREVIATIONS
2	GENERAL NOTES AND DETAILS
3	STA. 0+00 TO STA. 14+00
4	STA. 14+00 TO STA. 26+75

ABBREVIATIONS

AVE.	AVENUE	I.D.	INSIDE DIAMETER
CONC.	CONCRETE	INV.	INVERT (ELEVATION)
CONN.	CONNECT	MAX.	MAXIMUM
CONT.	CONTINUE	MIN.	MINIMUM
DIA.	DIAMETER	M.H.	MANHOLE
DWG.	DRAWING	O.D.	OUTSIDE DIAMETER
EA.	EACH	PS	PRESSURE SEWER
EL.	ELEVATION	S	SANITARY SEWER
GND.	GROUND	STA.	STATION
HORIZ.	HORIZONTAL	TYP.	TYPICAL
C.I.	CAST IRON	VERT.	VERTICAL
S.P.	SEWER PIPE		



PROPOSED	LEGEND	EXISTING
○	SEWER MANHOLE	○
□	CATCH BASIN	□
□	INLET	□
○	CLEANOUT	○
⊗	MONUMENT	⊗
⊗	TELEPHONE MANHOLE	⊗
△	VALVE	△
△	WATER METER	△
○	TELEPHONE POLE	○
○	POWER POLE	○
○	LUMINAIRE AND POLE	○
○	TRAFFIC SIGNAL POLE	○
○	JUNCTION BOX	○
○	FIRE HYDRANT	○
○	PARKING METER	○
○	GAS LINE	○
—	WATER LINE	—
—	BURIED TELEPHONE CABLE	—
—	SANITARY SEWER LINE	—
—	STORM SEWER LINE	—
—	COMBINED SANITARY & STORM LINE	—
—	FENCE	—
—	EDGE OF SIDEWALK	—
—	EDGE OF PAVEMENT	—
—	CURB	—
—	RIGHT OF WAY	—
—	PROPERTY LINE	—
—	ROCKERY	—
—	RETAINING WALL	—
—	SIGN STRUCTURE	—
—	EDGE OF FILL SLOPE	—
—	NEW DRIVEWAY	—
—	POLE ANCHOR	—
—	TRAFFIC SIGNAL CONTROLLER	—
—	SMALL SIGN	—
—	EASEMENT LINE	—



CALL 48 HOURS
BEFORE YOU DIG
1-800-424-5555

OYSTER BAY FORCE MAIN
CONTRACT - C2
DEPARTMENT OF PUBLIC WORKS
CITY OF BREMERTON
BREMERTON, WASHINGTON



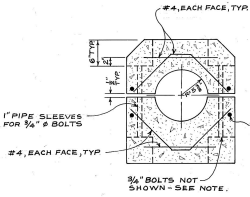
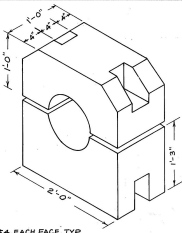
MORRIE DAWKINS, MAYOR
CITY ENGINEERING DEPT.
ALLAN L. KANE, CITY ENGINEER
DAVID B. BAKER, ASS'T. CITY ENGINEER

OFFICE OF THE CITY ENGINEER Bremerton Wash.	
OYSTER BAY FORCE MAIN	
LOCATION MAP, LEGEND, AND ABBREVIATIONS	
SCALE HORIZ. 1"=50' VERT. 1"=10'	DESIGNED BY DATE 5/28/00
BY DATE 5/28/00	CHECKED BY DATE 5/28/00
REF F.B. 400	SHEET NUMBER 1 OF 2
JOB NO 80027	DWS NO 84027
ALLAN KANE CITY ENGINEER	

CONTRACT C 2

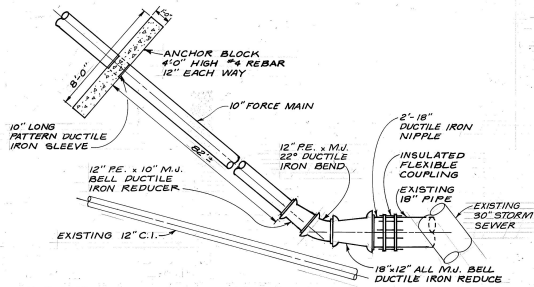
RECORD DRAWING 4-1-B6 WJM

DATE	
BY	
PROJECT	
LOCATION	
SCALE	
DATE	
BY	
PROJECT	
LOCATION	
SCALE	
DATE	
BY	
PROJECT	
LOCATION	
SCALE	
DATE	
BY	
PROJECT	
LOCATION	
SCALE	
DATE	
BY	



- NOTES:**
1. PROVIDE 1" MIN. CONC. COVER ON ALL REINFORCING STEEL.
 2. BOLTS SHALL BE #16 STAINLESS STEEL "ALL THREAD" WITH FLAT PLATE WASHER, SPLIT RING LOCK WASHER, AND DOUBLE NUTS AT EACH END.
 3. WRAP FORCE MAIN WITH 2 LAYERS 15 POUND FELT OR 1 LAYER 1/4" NEOPRENE AT EACH BALLAST BLOCK.
 4. MIN. WEIGHT OF CONCRETE SHALL BE 150 POUNDS PER CUBIC FOOT.
 5. CONCRETE BALLAST BLOCKS REQUIRED FOR POLYETHYLENE PIPE ONLY.

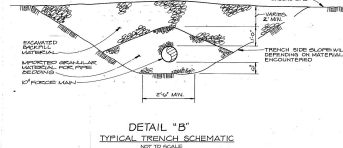
DETAIL "A"
CONCRETE BALLAST BLOCK
SCALE: 1"=1'-0"



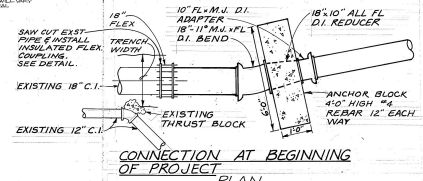
DETAIL "C"
CONNECTION TO EXISTING 18-INCH C.I. PIPE AT PS. 13
NTS

GENERAL NOTES:

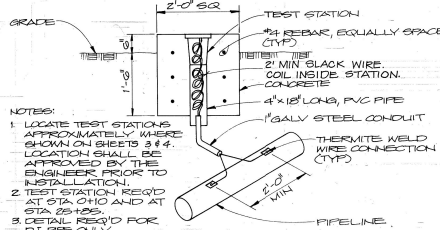
1. ALL ELEVATIONS SHOWN ARE TO CITY OF BREMERTON DATUM. TO OBTAIN THE NATIONAL GEODETIC VERTICAL DATUM ELEVATIONS, SUBTRACT 115.90 FEET.
2. EXISTING UNDERGROUND UTILITIES SHOWN ARE TAKEN FROM EXISTING RECORDS AND ARE FOR THE CONVENIENCE OF THE CONTRACTOR ONLY. BOTH LOCATION AND DEPTH ARE APPROXIMATE. IT IS THE CONTRACTOR'S RESPONSIBILITY TO USE THE "ONE CALL" TELEPHONE NUMBER (1-800-424-5555) TO CONTACT ALL UTILITY COMPANIES 48 HOURS BEFORE CONSTRUCTION IS STARTED TO CONFIRM LOCATIONS. SEE SPECIFICATIONS SECTION "GENERAL REQUIREMENT."
3. STATIONING IS GIVEN TO THE NEAREST FOOT AND IS ONLY APPROXIMATE.
4. EXISTING CONTOURS SHOWN ON THE PLANS ARE APPROXIMATE AND SHALL BE VERIFIED IN THE FIELD.
5. PRIOR TO BEGINNING CONSTRUCTION, THE CONTRACTOR SHALL LOCATE AND DETERMINE SIZE AND ELEVATIONS OF EXISTING UTILITIES AT THE POINT CONNECTING TO OR INTERFERING WITH THE NEW PIPELINES.
6. CONTRACTOR SHALL USE EXTREME CAUTION AND CARE WHEN EXCAVATING NEAR EXISTING UTILITIES, AND SHALL BE RESPONSIBLE FOR ALL DAMAGE DONE TO EXISTING UTILITIES.



DETAIL "B"
TYPICAL TRENCH SCHEMATIC
NTS

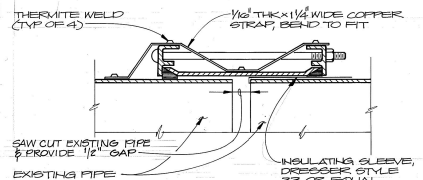


CONNECTION AT BEGINNING OF PROJECT
PLAN
DETAIL "E"



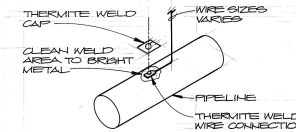
- NOTES:**
1. LOCATE TEST STATIONS APPROXIMATELY WHERE SHOWN ON SHEET 3 & 4. LOCATION SHALL BE APPROVED BY THE ENGINEER PRIOR TO INSTALLATION.
 2. TEST STATION REQ'D AT STA. 0+10 AND AT STA. 25+00.
 3. DETAIL REQ'D FOR D.I. PIPE ONLY.

DETAIL "D"
FLUSH MOUNTED TEST STATION
NTS



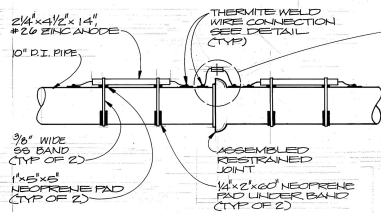
- NOTES:**
1. CLEAN METAL SURFACE TO BRIGHT METAL BEFORE WELDING STRAP BOND.
 2. COAT STRAP AND THERMITE WELDS WITH UNDERWATER CURING EPOXY AFTER WELDING IS COMPLETED.

INSULATED FLEXIBLE COUPLING FOR CONNECTING D.I. PIPE TO EXISTING PIPE
NTS



- NOTES:**
1. COAT WELD AREA & FILL RECESS ON THERMITE WELDED CAP WITH UNDERWATER CURING EPOXY AND APPLY CAP TO WELD.
 2. COPPER SLEEVE REQUIRED FOR THERMITE WELDING OF #12 AWG.
 3. USE COPPER SLEEVE ON #2 AWG JOINT BONDING WIRES.

THERMITE WELD WIRE CONNECTION
NTS



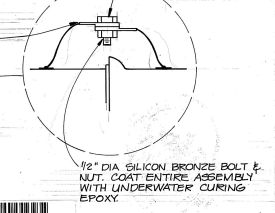
- NOTES:**
1. TYPICAL EACH D.I. PIPE LENGTH.
 2. REQUIRED FOR D.I. PIPE ONLY.
 3. TWO ANODES PER PIPE.
 4. BOND FLANGED JOINTS ALSO.

PIPE MOUNTED ZINC ANODE INSTALLATION & PIPE BONDING
NTS

RECORD DRAWING
4-1-86



BOLTED CONNECTION FOR JOINTS MADE UNDERWATER ONLY. CONTINUOUS WIRE FOR OTHER JOINTS.



1/2" DIA SILICON BRONZE BOLT & NUT. COAT ENTIRE ASSEMBLY WITH UNDERWATER CURING EPOXY.



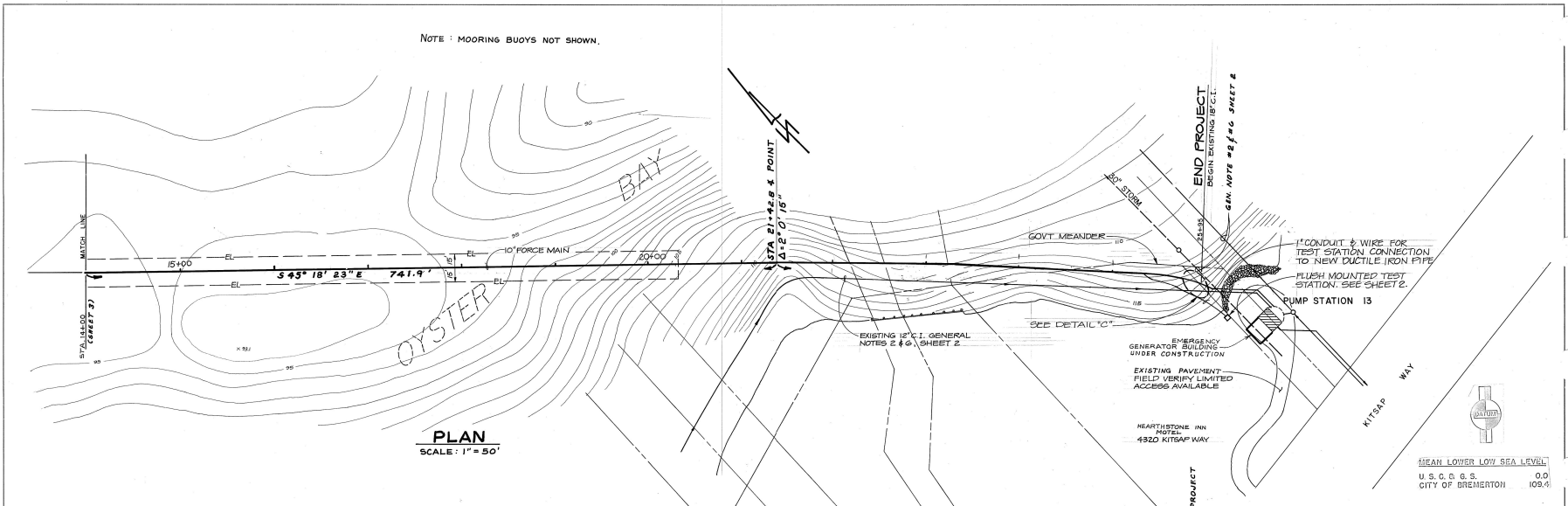
SCALE AS NOTED	
DESIGNED BY: [Signature]	
DATE: [Date]	
DRAWN BY: [Signature]	
DATE: [Date]	
CHECKED BY: [Signature]	
DATE: [Date]	
REF: [Reference]	
PROJECT NO. 82027	
SHEET NUMBER 2 of 2	
DWG. NO. 84027	

RECORD DRAWING 4-1-86 WJM

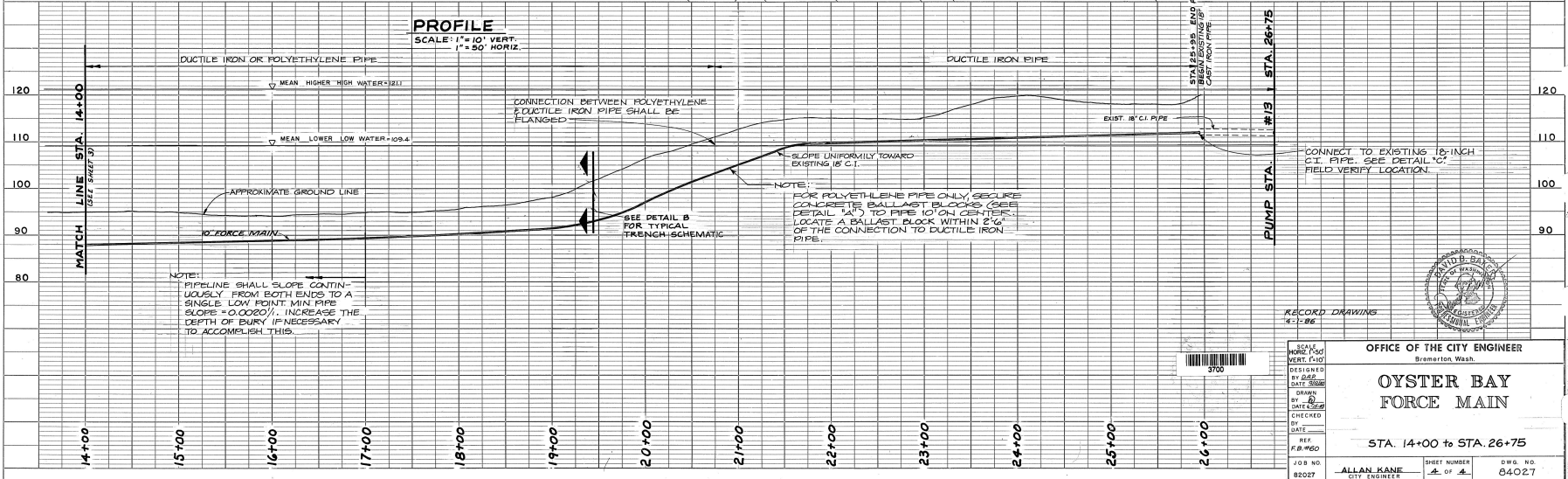
DATE	
BY	
PROJECT	
DESIGNED BY	
CHECKED BY	
DATE	
BY	
PROJECT	
DESIGNED BY	
CHECKED BY	
DATE	
BY	

DATE	
BY	
PROJECT	
DESIGNED BY	
CHECKED BY	
DATE	
BY	
PROJECT	
DESIGNED BY	
CHECKED BY	
DATE	
BY	

NOTE: MOORING BUOYS NOT SHOWN.



PLAN
SCALE: 1" = 50'



PROFILE
SCALE: 1" = 10' VERT.
1" = 50' HORIZ.

RECORD DRAWING
5-1-86



SCALE	VERT. 1" = 10'
DESIGNED BY	
DATE	
CHECKED BY	
DATE	
BY	
PROJECT	
DESIGNED BY	
CHECKED BY	
DATE	
BY	

OFFICE OF THE CITY ENGINEER
Bremerton, Wash.

**OYSTER BAY
FORCE MAIN**

STA. 14+00 to STA. 26+75

JOB NO. 82027
SHEET NUMBER 4 OF 4
DWG. NO. 84027