

Sanitary Sewer Extensions

Project Number:

OB-3 is also known as PS #2 in these plans

SUMMARY OF QUANTITIES
SCHEDULE A

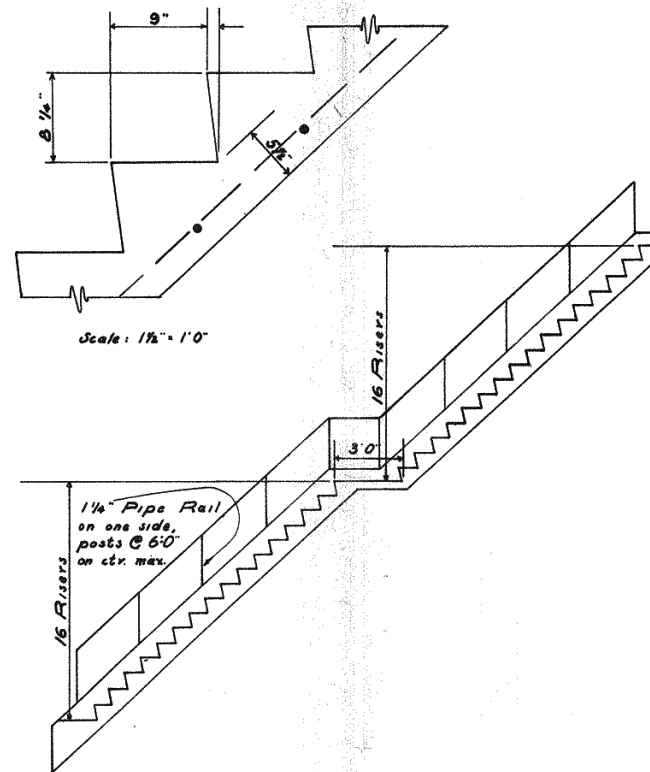
ITEM NO.	UNIT	DESCRIPTION	APPROX QUANTITY
1	LF	8" C.I. Pipe	5855
2	LF	4" C.I. Pipe	2615
3	Ea	8"x4" C.I. Tee	78
4	Ea	4" C.I. Caps	78
5	Ea	Construct 48" Diameter M.H.	21
6	Hr	Mechanical Tamping	10
7	LS	Connect To Existing System	
8	LS	Finish & Cleanup	

SCHEDULE B

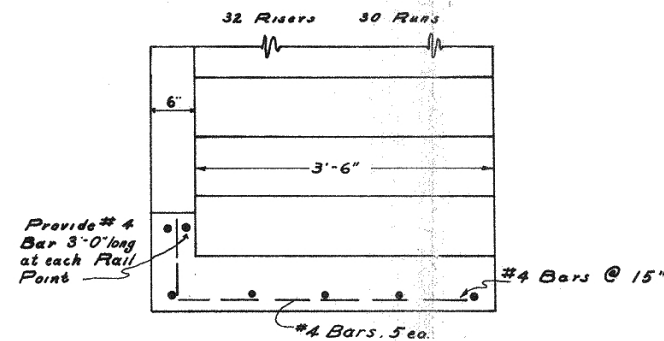
1	LS	Clear & Grub	
2	LS	Pump Station #1 & Appurtenances	
3	LS	Pump Station #2 & Appurtenances	
4	CY	Unclassified Excavation	100
5	CY	Bank Run Gravel	600
6	CY	Ballast	50
7	CY	Crushed Surfacing	25
8	Ton	A.C. Class B	35
9	Ea	C.B. Inlets	2
10	LS	8" C.M.P. Drains	
11	LS	Guard Railing	
12	LS	Finish & Cleanup	
13	LS	Reinforced Concrete Steps	
14	LS	Reinforced Concrete Retaining Wall	
15	LS	Water Service	
16	Ea	Construct 48" Diameter Manhole	2

SHEET INDEX

1. Vicinity Map & Summary of Quantities
2. A-Line
3. B-Line
4. C-Line & D-Line
5. Details
6. Pump Station No. 1 Piping Details
7. Pump Station No. 2 Piping Details
8. Pump Station 1 & 2 Structural
9. Pump Station 1 & 2 Architectural
10. Pump Station 1 & 2 Electrical



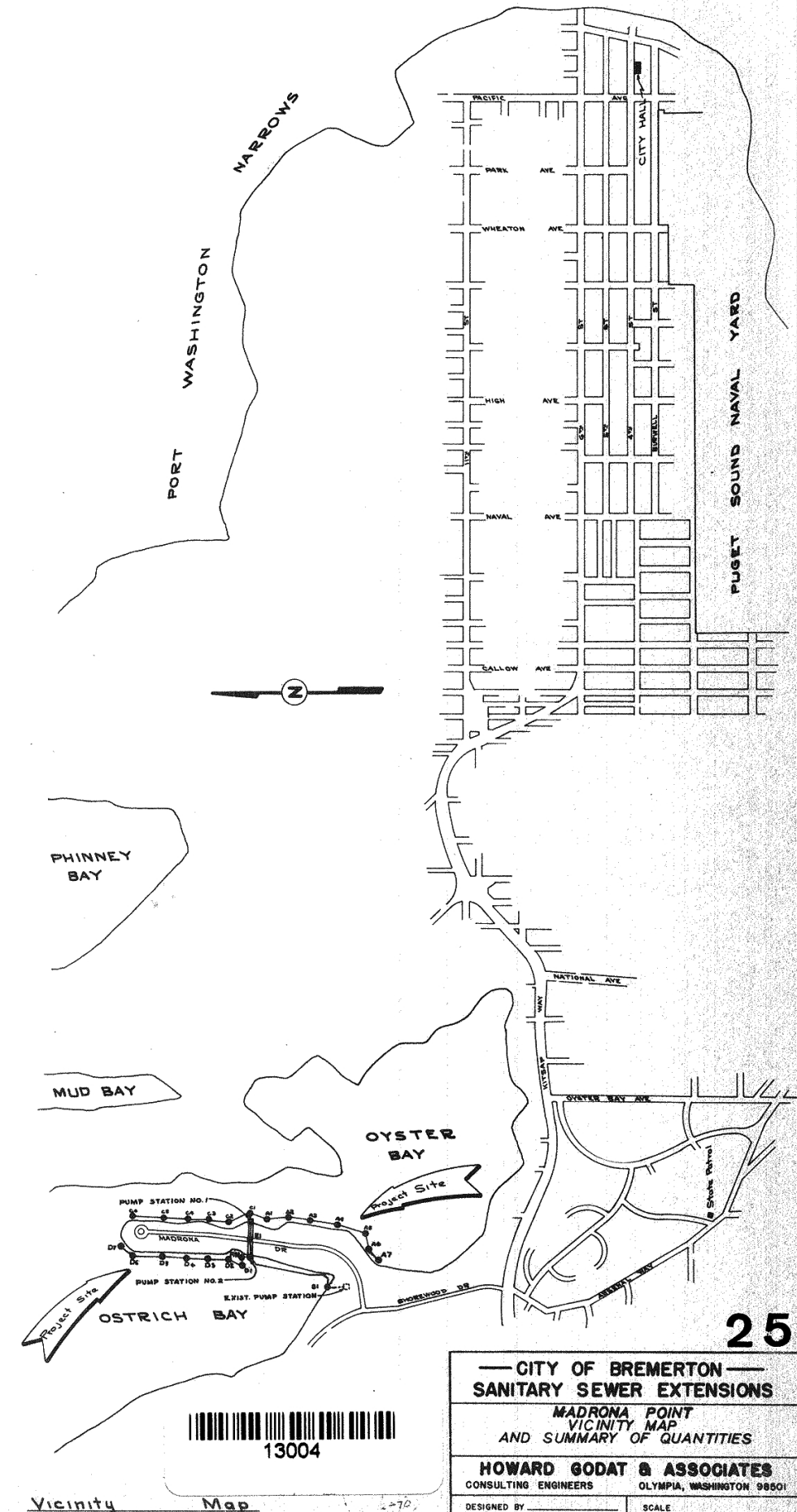
Scale: 1 1/2" = 1'0"



Scale: 1" = 1'0"

STEP DETAIL

NOTE: DATUM
0.0 TIDE = 10.2 CITY OF BREMERTON



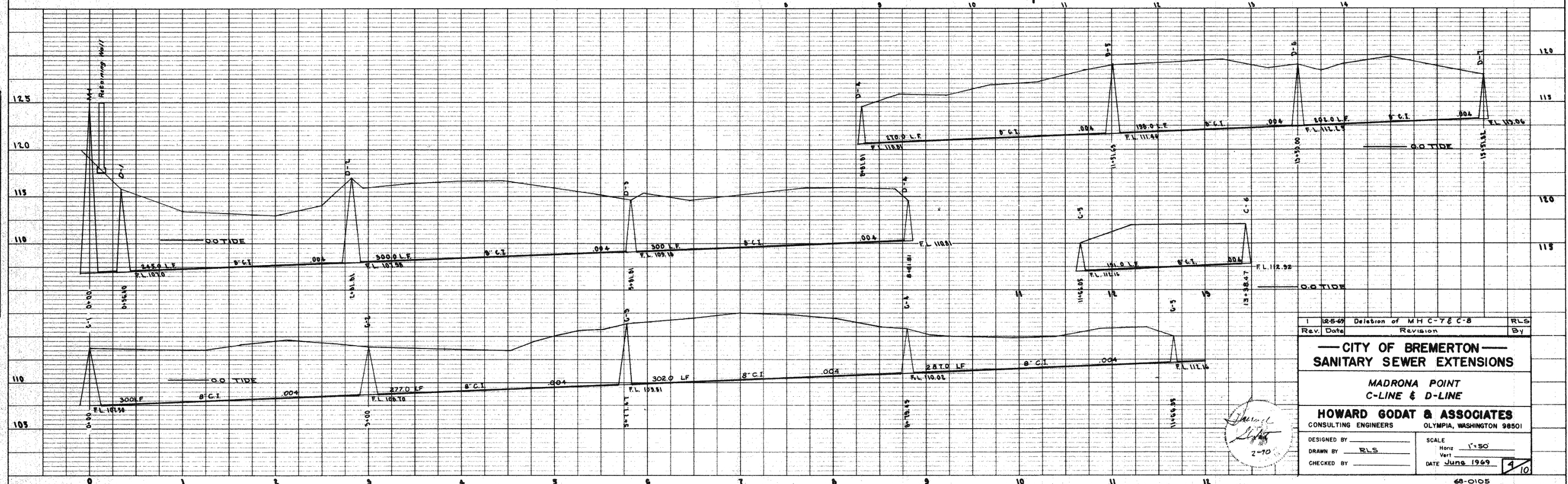
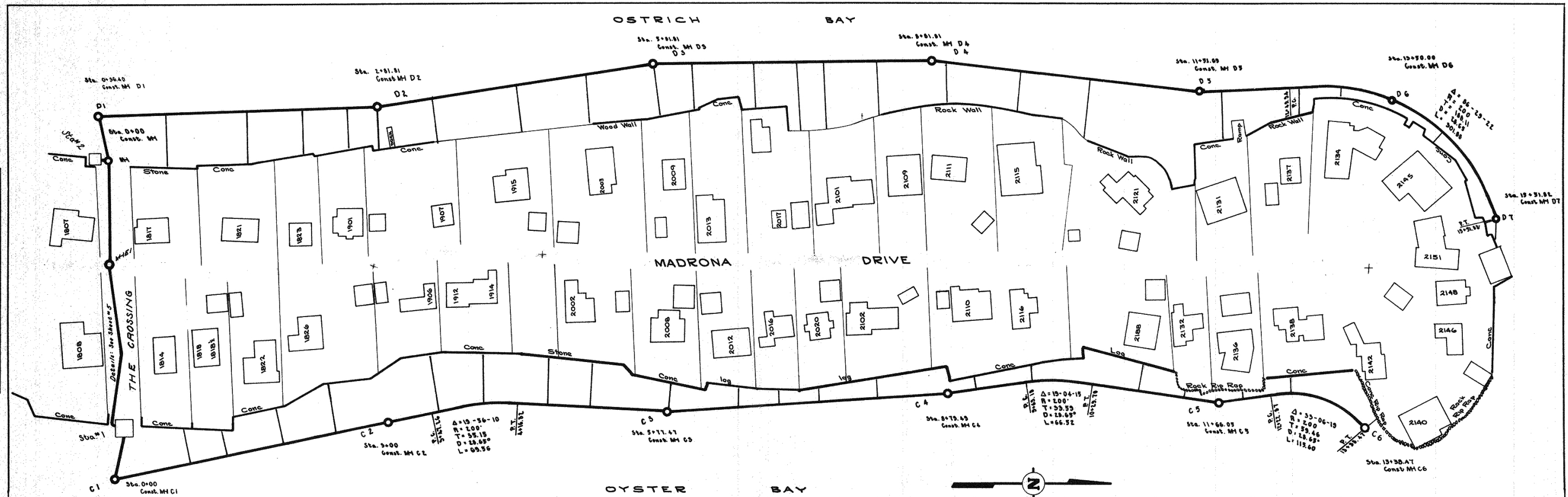
CITY OF BREMERTON
SANITARY SEWER EXTENSIONS
MADRONA POINT
VICINITY MAP
AND SUMMARY OF QUANTITIES

HOWARD GODAT & ASSOCIATES
CONSULTING ENGINEERS OLYMPIA, WASHINGTON 98501

DESIGNED BY _____ SCALE _____
DRAWN BY **RLS** Horiz **NONE**
CHECKED BY _____ Vert _____
DATE **JUNE 1969**

PLAN	SUBMITTED	DATE
	REVISED	
	NOTED	
	ALIGNED	
	CHECKED	
	BY	
	DATE	

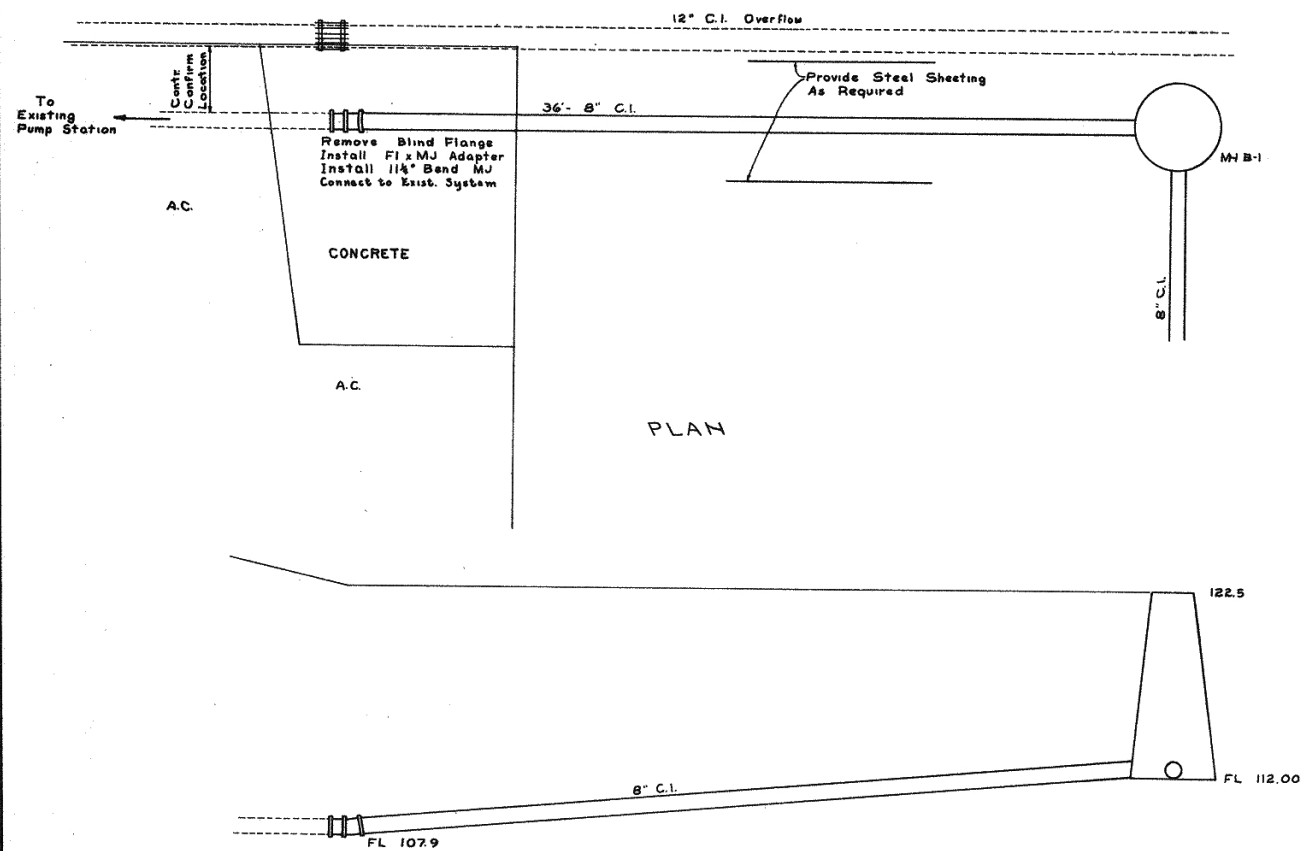
PROFILE	SUBMITTED	DATE
	REVISED	
	NOTED	
	ALIGNED	
	CHECKED	
	BY	
	DATE	



1	12-5-69	Deletion of MHC-7&C-8	RLS
Rev.	Date	Revision	By
CITY OF BREMERTON			
SANITARY SEWER EXTENSIONS			
MADRONA POINT			
C-LINE & D-LINE			
HOWARD GODAT & ASSOCIATES			
CONSULTING ENGINEERS		OLYMPIA, WASHINGTON 98501	
DESIGNED BY	SCALE	Horiz. 1"=50'	
DRAWN BY RLS	Vert.	DATE June 1969	
CHECKED BY		10	

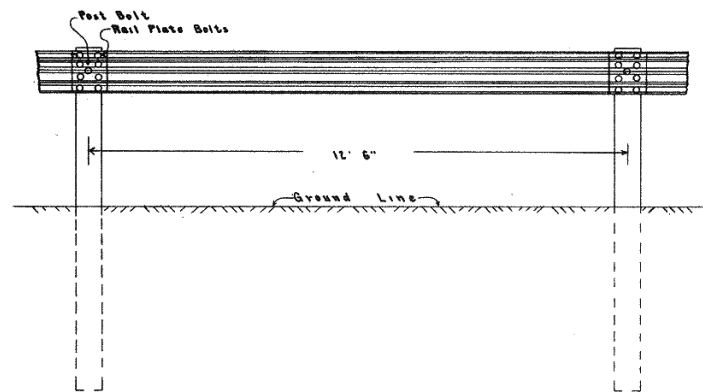


68-0105

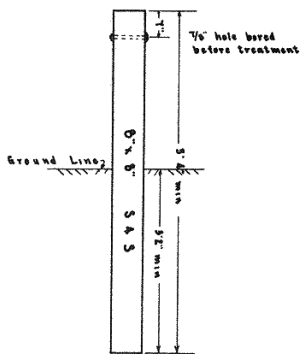


PLAN

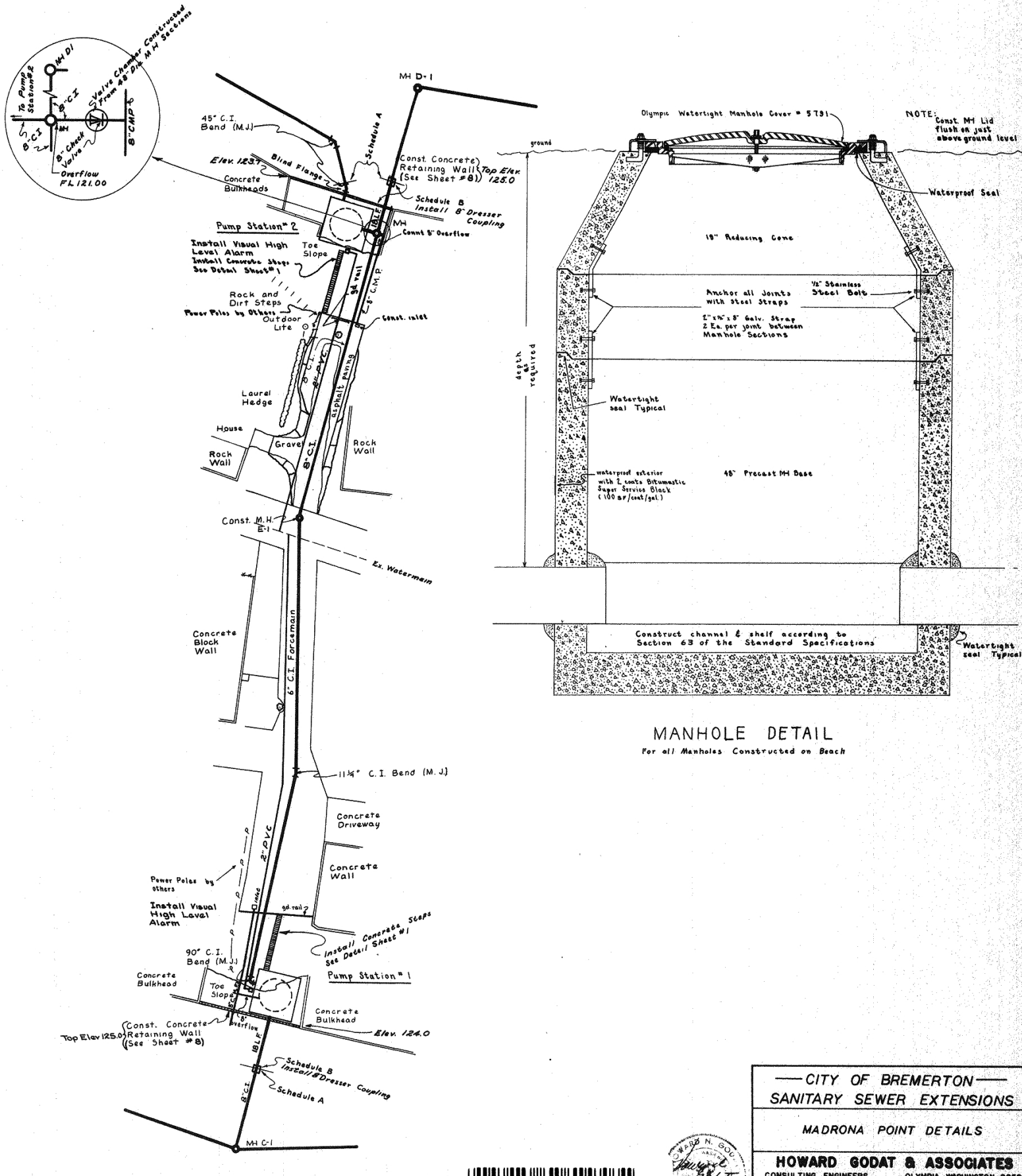
ELEVATION



SINGLE BEAM GUARD RAIL



CREOSOTE TREATED WOOD POST



MANHOLE DETAIL
For all Manholes Constructed on Beach

THE CROSSING

13008

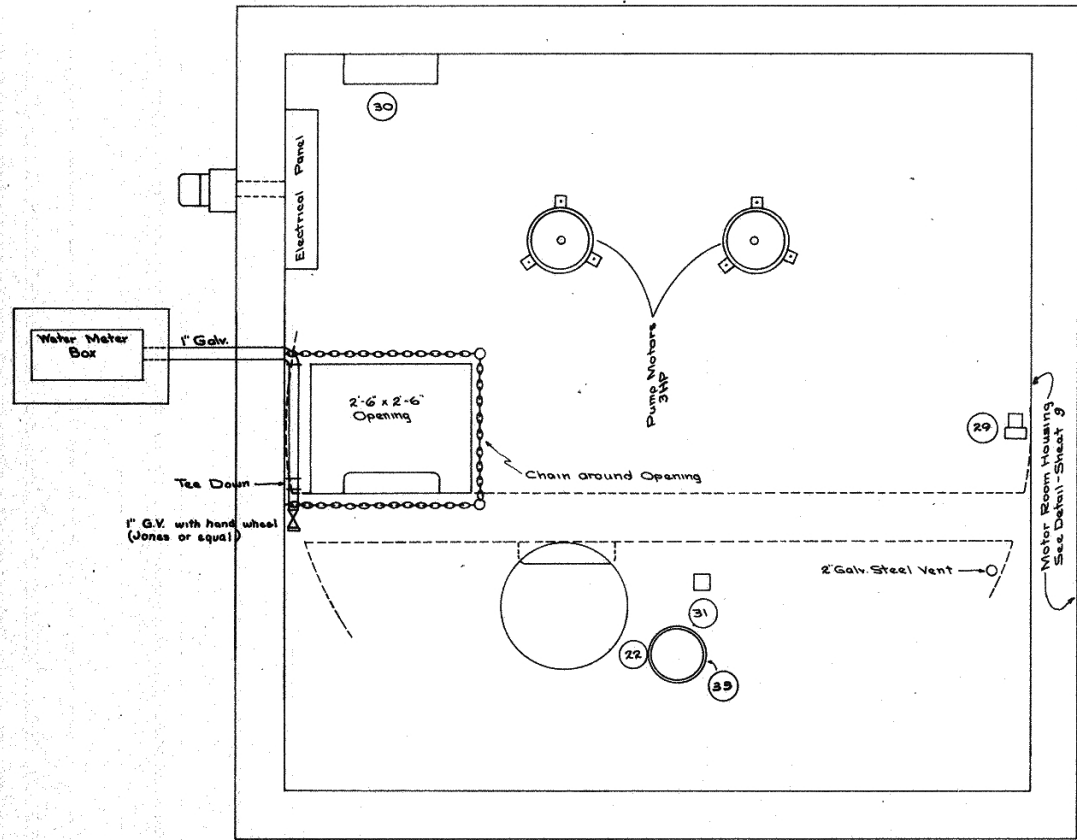


— CITY OF BREMERTON —
SANITARY SEWER EXTENSIONS

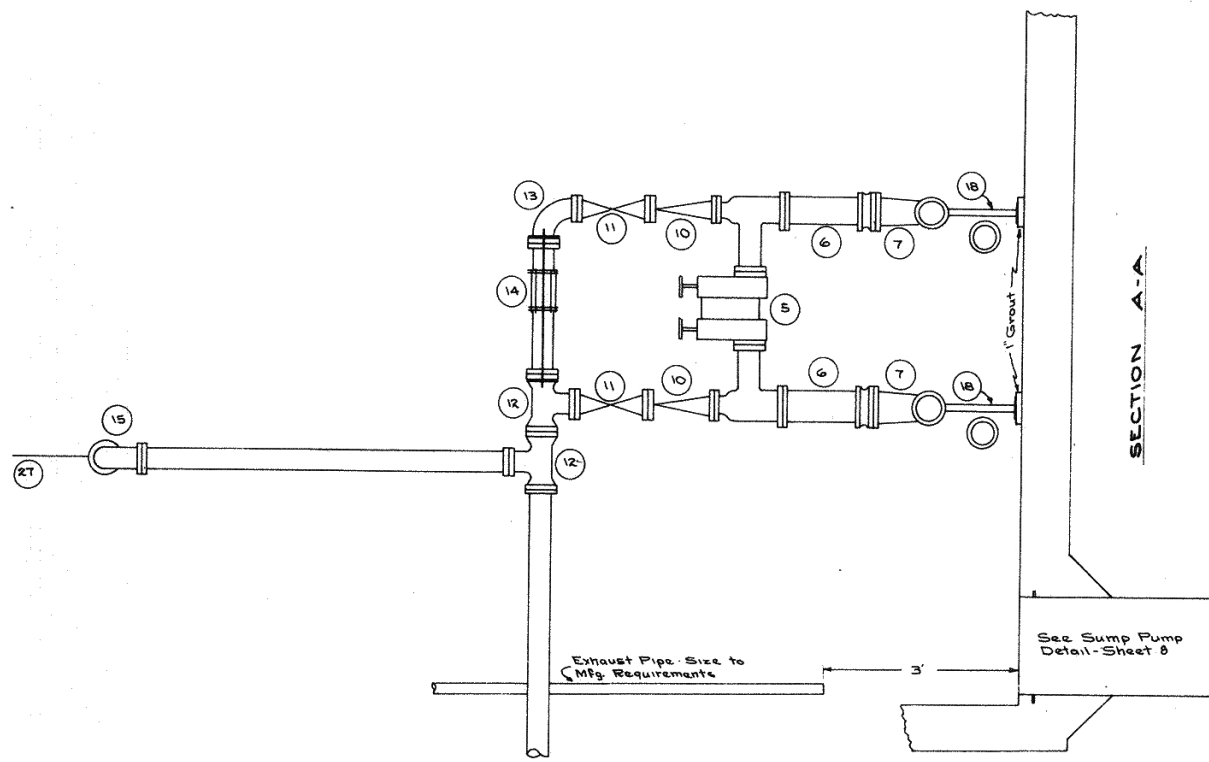
MADRONA POINT DETAILS

HOWARD GODAT & ASSOCIATES
CONSULTING ENGINEERS OLYMPIA, WASHINGTON 98501

DESIGNED BY	SCALE
DRAWN BY JW	Horiz 1" = 20'
CHECKED BY	Vert
	DATE June 1969

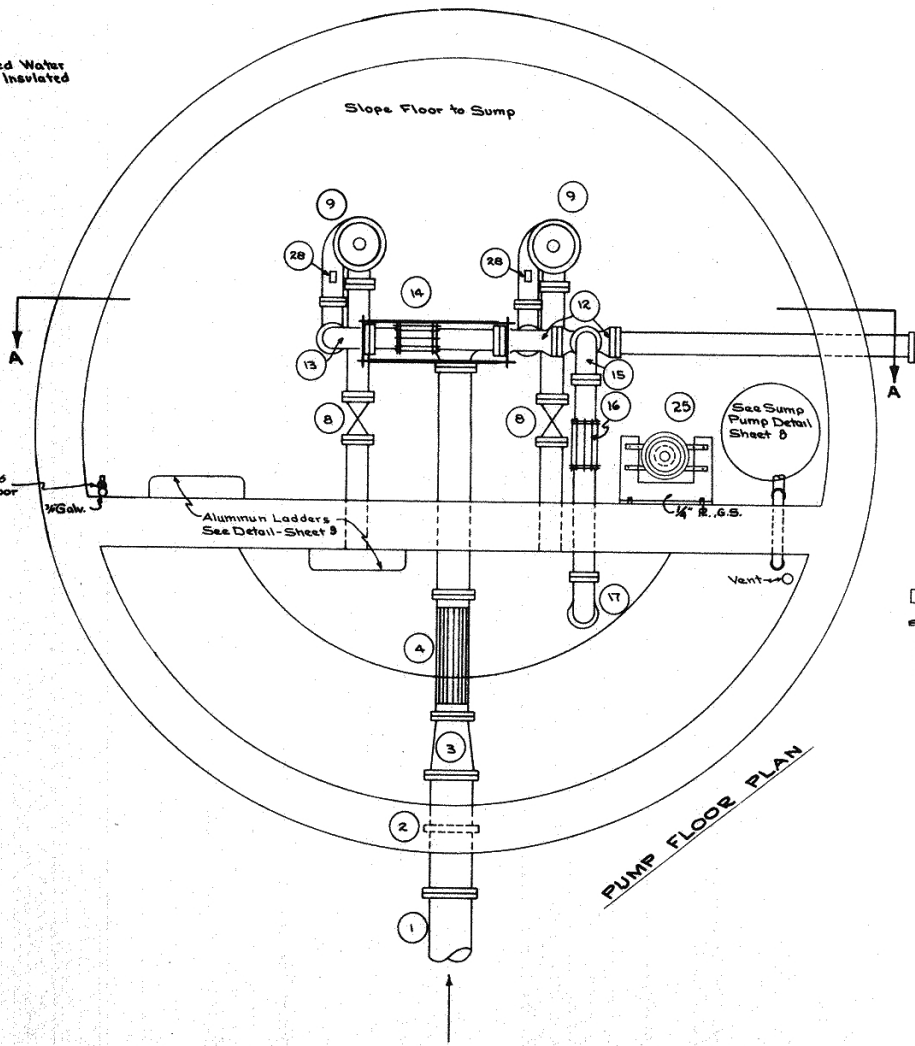


MOTOR FLOOR PLAN

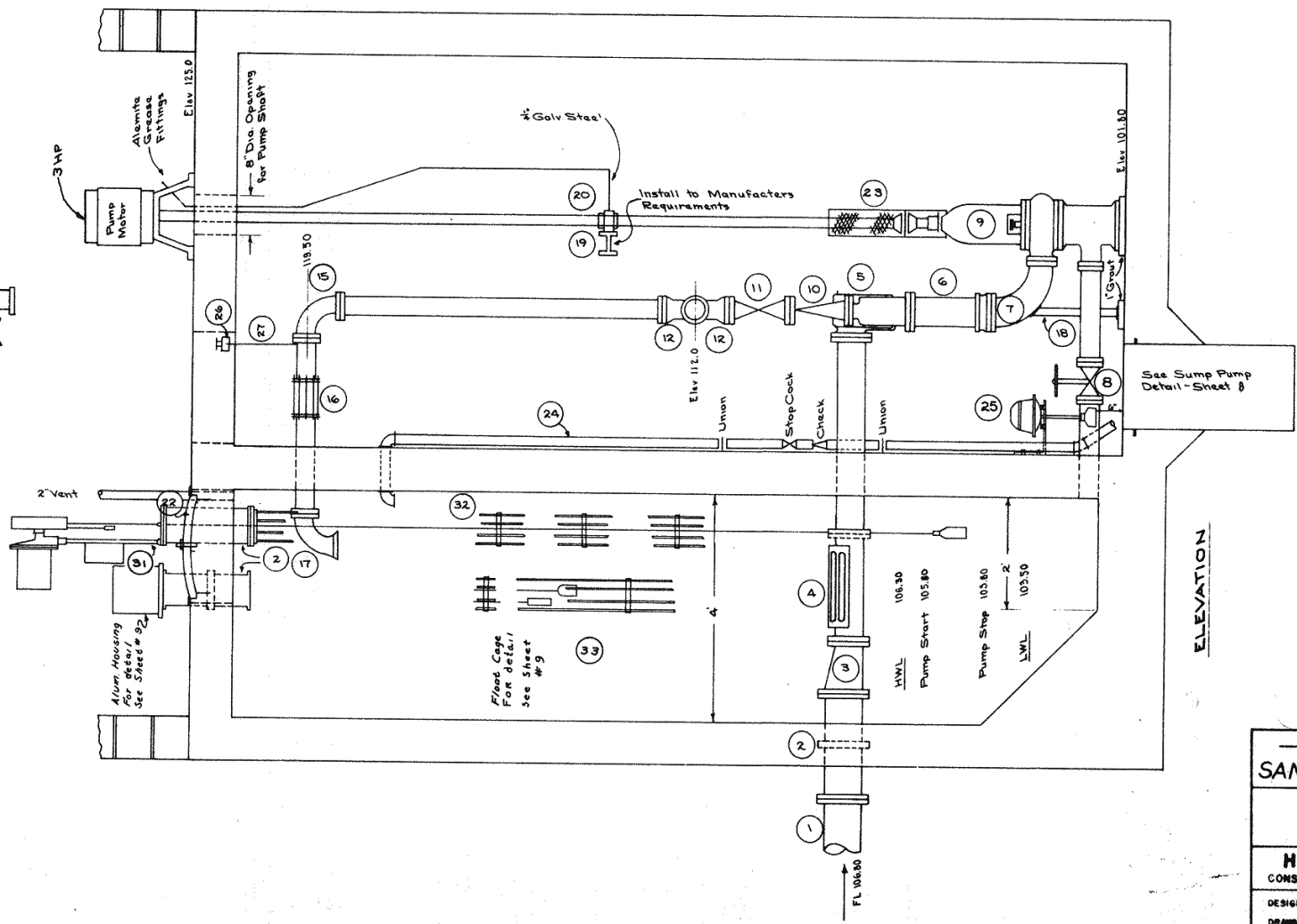


- 1 1" Cast Iron Pipe
- 2 8" Wall Sleeve (2' Long)
- 3 8" x 6" Reducer (eccentric)
- 4 Overflow & Screen Assembly
- 5 Combination Check Valve
- 6 Strainer - 2 Req'd
- 7 6" x 4" Base Elbow - 2 Req'd
- 8 Gate Valve - 2 Req'd
- 9 Sump Pump - 2 Req'd
- 10 Check Valve - 2 Req'd
- 11 Plug Valve - 2 Req'd
- 12 6" x 4" Tee (Flanged)
- 13 6" x 4" Reducing Elbow
- 14 Dresser Coupling with shackles
- 15 4" Elbow
- 16 4" Dresser Coupling
- 17 4" Band (Flange x Flange)
- 18 Fitting Support
- 19 Support Beam
- 20 Intermediate Bearing with Universal Joint
- 21 Sump Pump Chicago LGL 2, 1150
- 22 15 g.p.m. at 28' T.D.H.
- 23 Water Tight Manhole Cover - Olympic # 5791
- 24 Shaft Guard
- 25 Discharge from Sump Pump - 2' Galv. Steel Pipe
- 26 Autocan Vigilrol # 7501
- 27 3" Pipe Hanger
- 28 Cone Insert Gravel # 882
- 29 Pressure Gauge, 0-10 psi, 2" Dial
- 30 Exhaust Fan, Westinghouse Electric Corp. Sturdevant Div. 1/2 H.P.
- 31 750 Watt Electric Heater, Thermostat Controlled
- 32 Autocan Floatrol w/ alternator
- 33 Float Cage for Floatrol
- 34 Float Cage for Future Recorder

NOTE: All Exposed Water Lines to be Insulated



PUMP FLOOR PLAN



ELEVATION

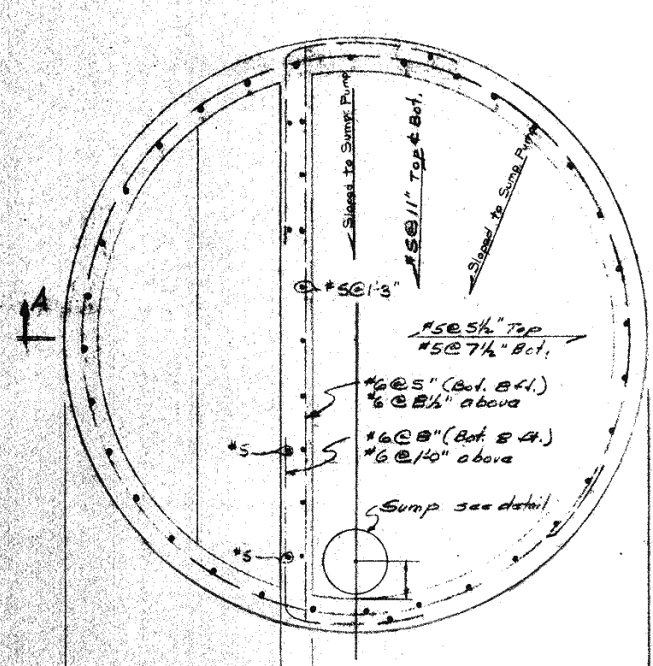


— CITY OF BREMERON —
SANITARY SEWER EXTENSION

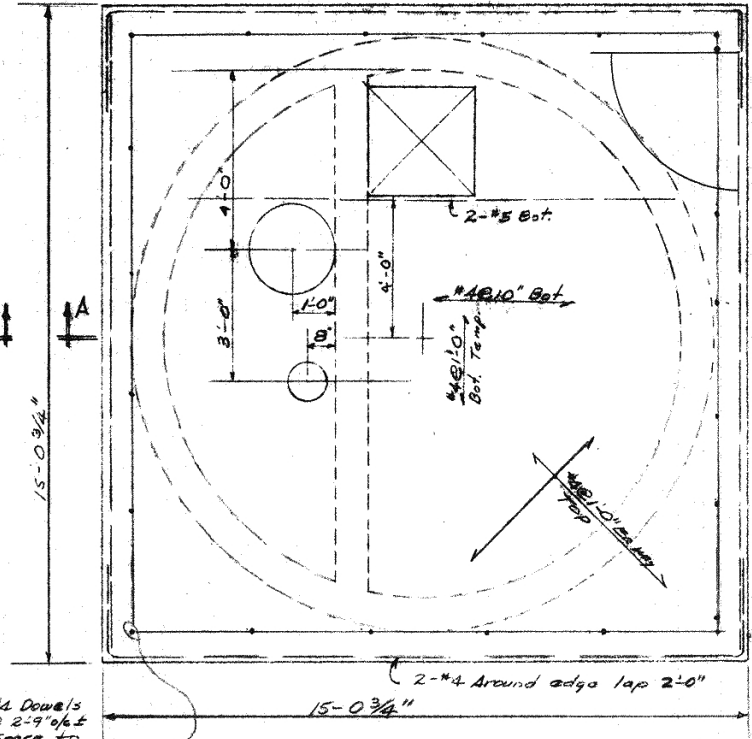
MADRONA POINT
 STATION NO. 2
 PIPING DETAILS

HOWARD GOAT & ASSOCIATES
 CONSULTING ENGINEERS OLYMPIA, WASHINGTON

DESIGNED BY: _____ SCALE: _____
 DRAWN BY: RLS High _____
 CHECKED BY: _____ Low _____

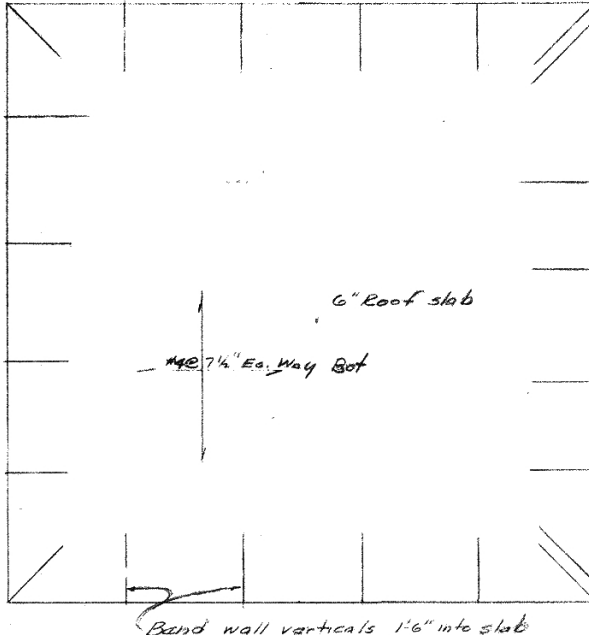


SECTION B-B



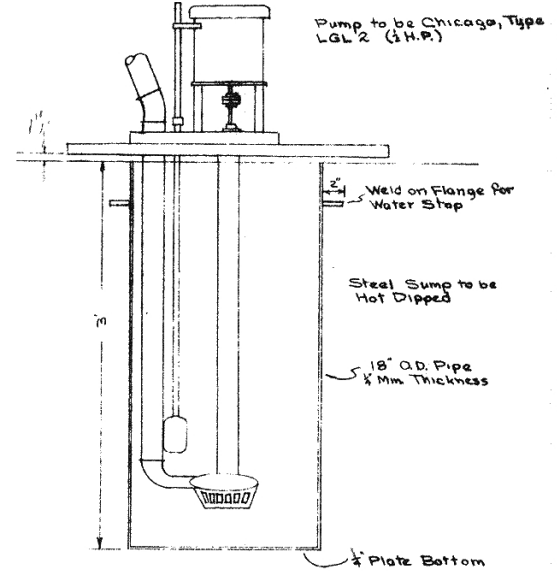
VIEW C-C
UPPER FLOOR SLAB

Reinforce masonry walls with #4 @ 2'-9" o/c vertical and #4 @ 2'-5" o/c horiz. Bend horiz. bars 2'-0" around corners. Fill cavity with mortar.

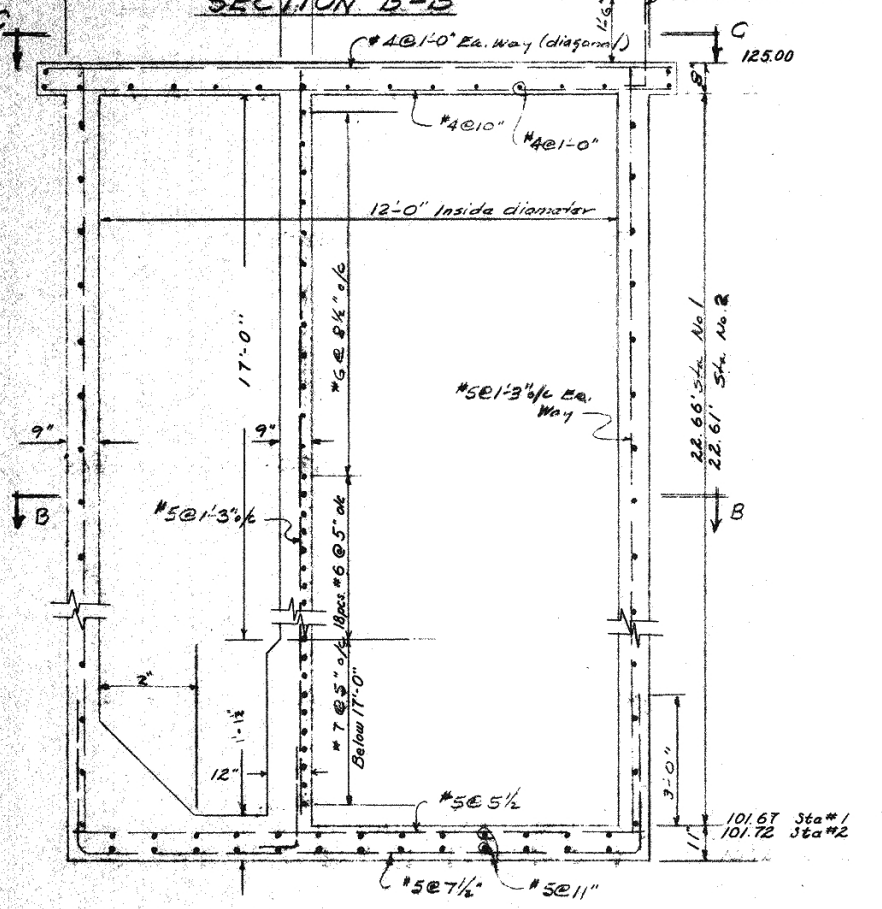


ROOF SLAB

Band wall verticals 1'-6" into slab



SUMP PUMP DETAIL

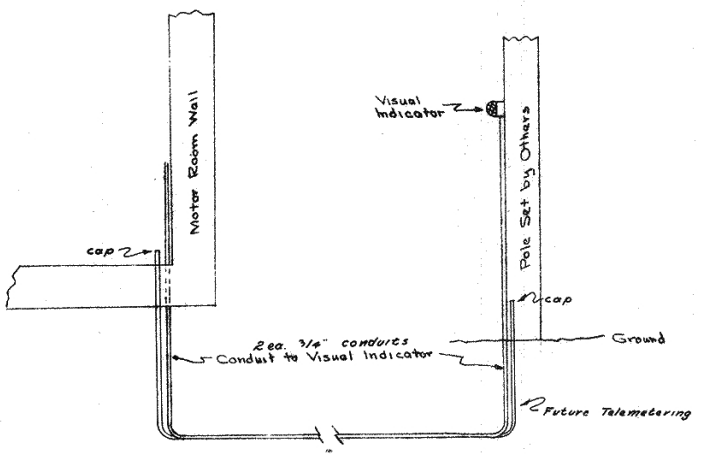


SECTION A-A

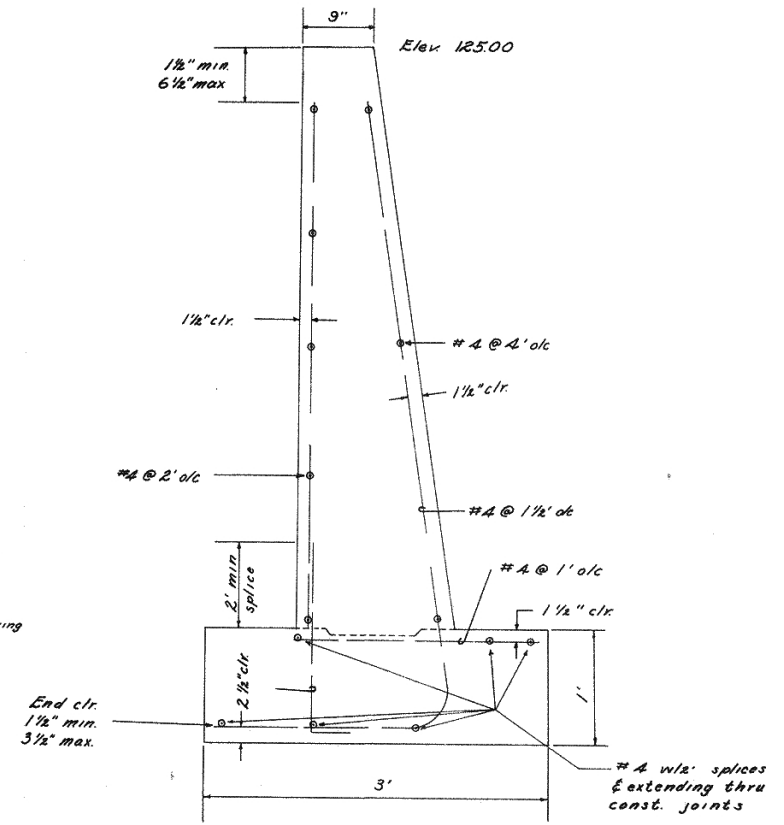
PUMP PIT DETAILS

See Sheets 617 for dimensions & details not shown.

NOTE
Concrete to be 3,000 psi
Reinforcing Steel to be Intermediate Grade



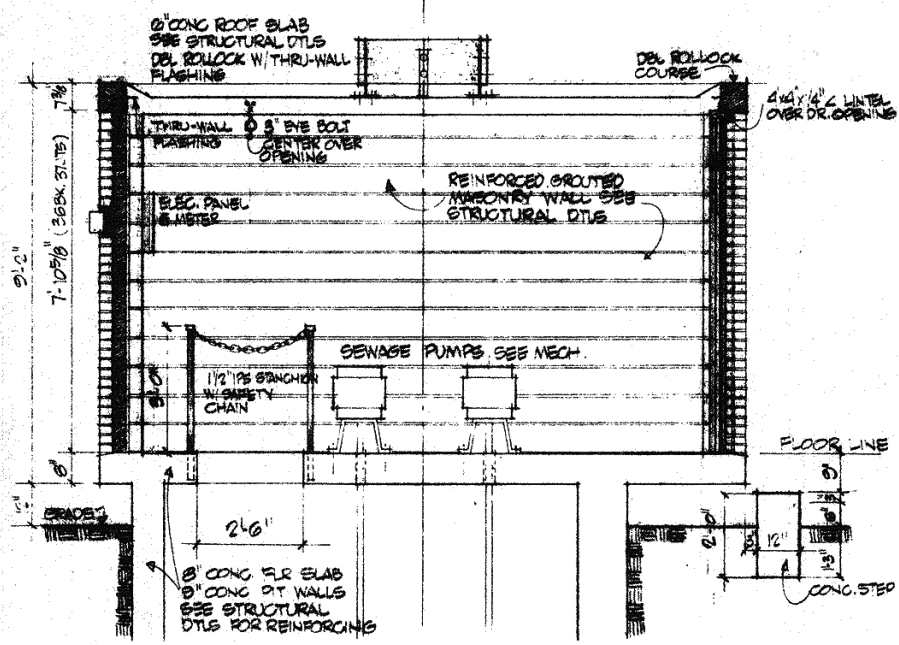
VISUAL HIGH LEVEL ALARM



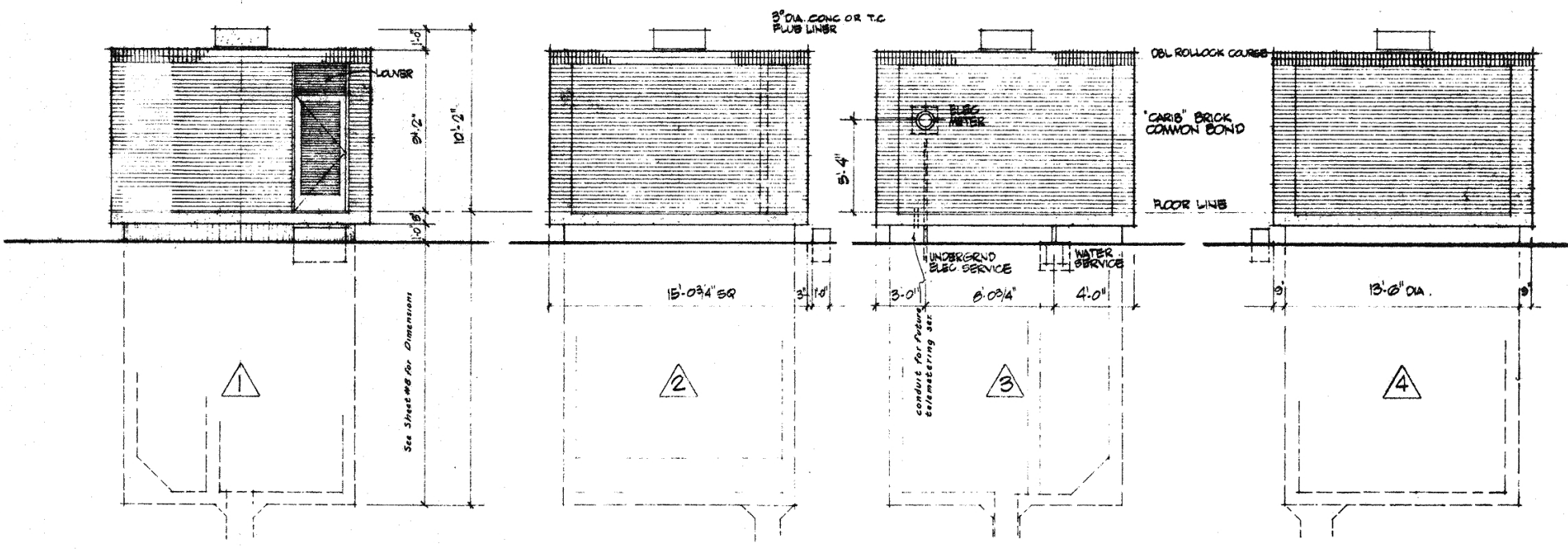
RETAINING WALL STEEL DETAIL

MADRONA POINT
— CITY OF BREMERTON —
SANITARY SEWER EXTENSIONS
PUMP STATIONS NO. 1 & 2
STRUCTURAL
HOWARD GODAT & ASSOCIATES
CONSULTING ENGINEERS OLYMPIA, WASHINGTON 98501
DESIGNED BY _____ SCALE _____
DRAWN BY _____ Horiz. None
CHECKED BY _____ Vert. _____
DATE Sept. 1969

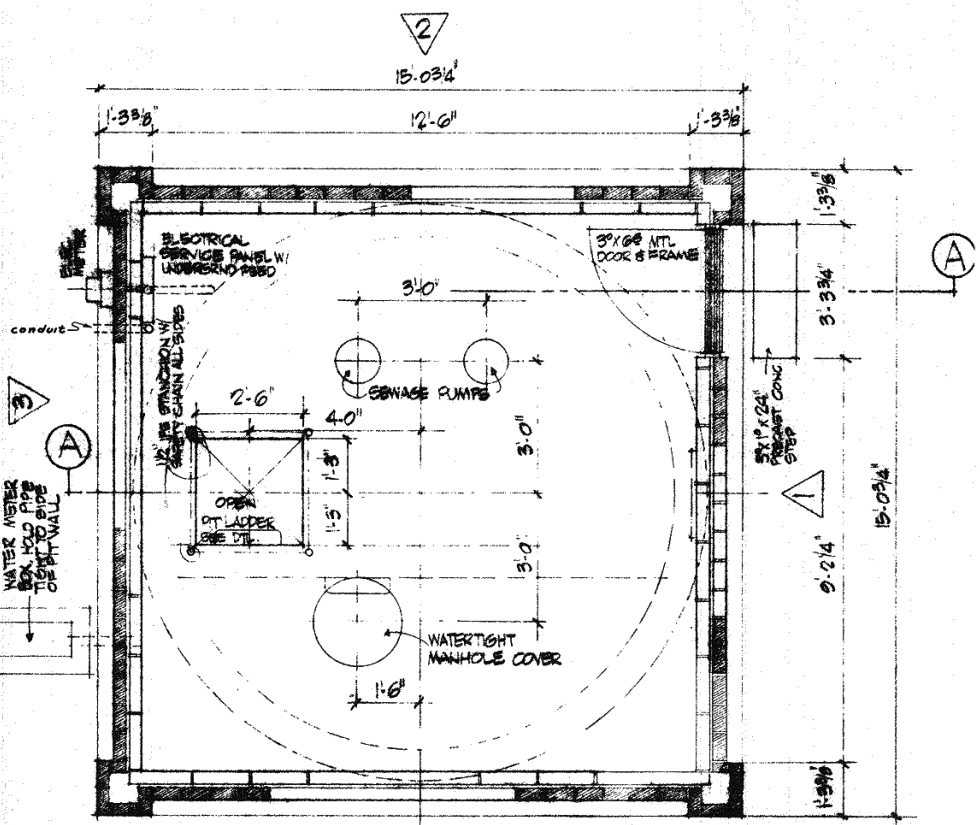




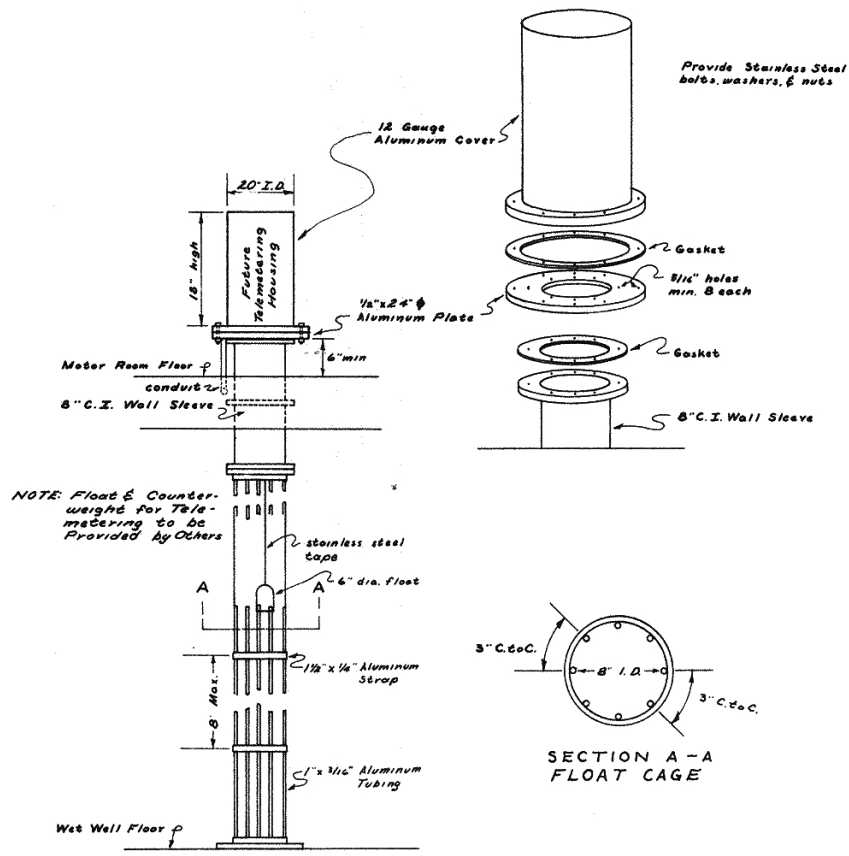
CROSS SECTION (A)



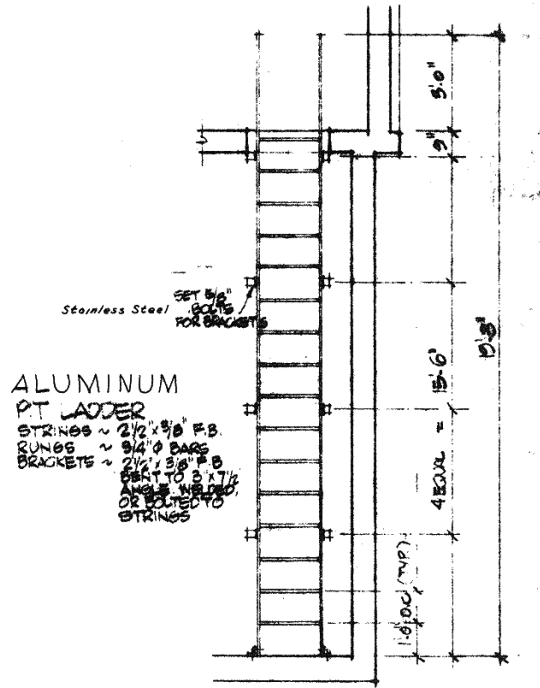
EXTERIOR ELEVATIONS SCALE: 1/4" = 1'-0"



TYPICAL FLOOR PLAN PUMPING STATION - 1/2" = 1'-0"



ALUMINUM FLOAT CAGE FOR FLOATROL & FUTURE TELEMETERING



ALUMINUM PT LADDER
STRINGS ~ 2 1/2" x 3/8" F.B.
RUNGS ~ 2 1/2" x 3/8" F.B.
BRACKETS ~ 2 1/2" x 3/8" F.B.
BOLT TO 3" x 1/2" ANGLE WELDED OR BOLTED TO STRINGS

ELEVATION

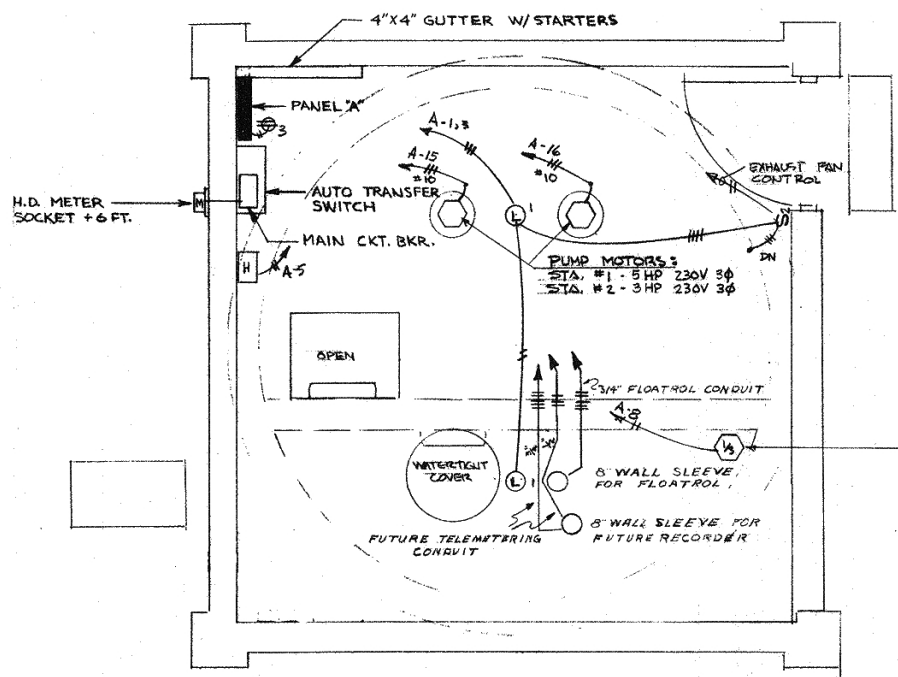
PLAN

MADRONA POINT
— CITY OF BREMERTON —
SANITARY SEWER EXTENSIONS
PUMP STATIONS NO. 1 & 2
ARCHITECTURAL

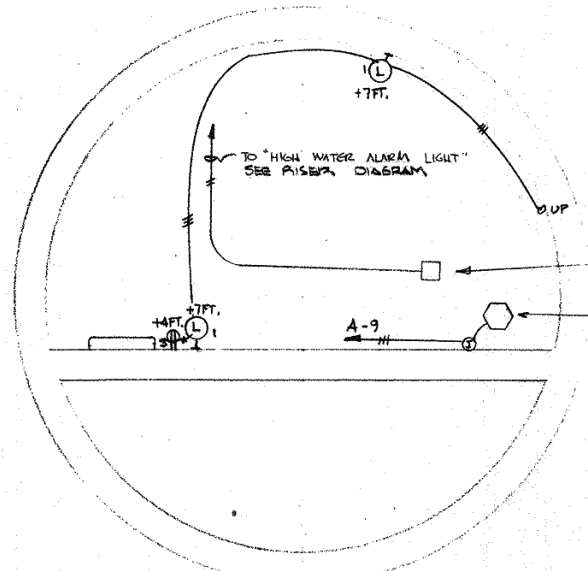
HOWARD GODAT & ASSOCIATES
CONSULTING ENGINEERS OLYMPIA, WASHINGTON STATE

DESIGNED BY: _____ SCALE: As Shown
DRAWN BY: _____ Vert: _____
CHECKED BY: _____ DATE: Sept. 1969

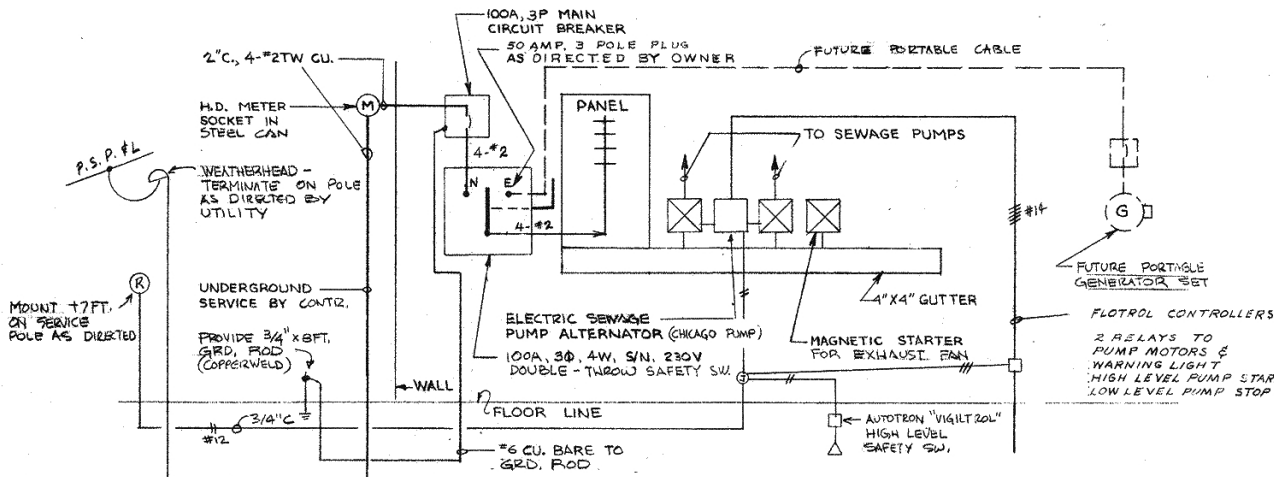




STATIONS #1 & #2
MOTOR FLOOR PLAN
 SCALE: 1/2" = 1'-0"



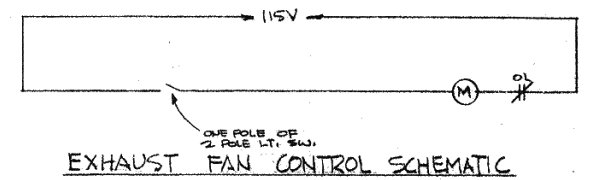
PUMP FLOOR
 SCALE: 1/2" = 1'-0"



SCHEMATIC ONE-LINE RISER DIAGRAM
 STATIONS #1 & 2
 NO SCALE

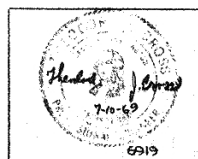
PANEL SCHEDULE (2 REQ'D)						
240/120 VOLTS, 3Ø, 4-WIRE, SURFACE MOUNT						
100 AMP MAINS, SQUARE D-NGO-24-4L						
KW	CIRCUIT	BKR. CKT. NO.	S/N	CKT. NO. BKR.	CIRCUIT	KW
0.6	LIGHTS	20/1	1	2	20/1	SPARE
0.8	RECEPTACLES	3	3	4	SPARE	BLANK HIGH PHASE - 4 PLACES
0.75	HEATER	5	5	6	SPARE	
	SPARE	20/1	7	8	20/1	
0.5	SUMP PUMP	20/3	9	10	30/3	SPARE
			11	12		
			13	14		
5.0	SEWAGE PUMP	30/3	15	16	30/3	SEWAGE PUMP
			17	18		
			19	20		
7.35						5.4

LEGEND	
SYMBOL	DESCRIPTION
—	EXPOSED CONDUIT, RIGID STEEL, GALVANIZED. - TICS INDICATE NUMBER OF WIRES - #12 AWG CU. UNLESS NOTED.
S ₂	TWO-POLE TOGGLE SWITCH, AH-#1992 IN CAST BOX, SURFACE MOUNTED, +42" ±
⊕	DUPLEX RECEPTACLE, GROUNDING TYPE, BRYANT #5252 IN CAST BOX, SURFACE MOUNTED, +12"
⊕	PORCELAIN LAMPHOLDER W/100 WATT LAMP
⊕	RED ALARM LIGHT - CROUSE-HINDS VXHA2199 W/RED 100W LAMP
⊕	MOTOR OR EQUIPMENT
H	RADIANT HEATER, ELECTRIC - 750 WATTS, 120V, 1Ø WITH BUILT-IN THERMOSTAT - MARKEL E582T SURFACE MOUNTED +7FT.
M	HEAVY-DUTY METER SOCKET TO SUIT UTILITY REQUIREMENTS
⊗	MAGNETIC STARTER OR CONTROLLER ALLEN-BRADLEY



EXHAUST FAN CONTROL SCHEMATIC

NOTE
 THIS DRAWING APPLIES TO BOTH PUMPING STATIONS 1 & 2 WHICH ARE IDENTICAL EXCEPT FOR SEWAGE PUMP HORSEPOWERS



— CITY OF BREMERTON —
SANITARY SEWER EXTENSIONS
 PUMP STATIONS NO. 1 & 2
 ELECTRICAL
HOWARD GODAT & ASSOCIATES
 CONSULTING ENGINEERS OLYMPIA, WASHINGTON 98501
 DESIGNED BY EM
 DRAWN BY EM/DAS
 CHECKED BY
 SCALE: AS NOTED
 DATE: 1969 10/10

